

Latest Addition to the  
Aurora Fire Pump Line

# 900 Series

2000/2500 GPM

High Head

Model 8-481-24

FLOWS@PRESSURES

2000 GPM 110-214 PSI

2500 GPM 115-215 PSI

SPEEDS

Diesel

1460 RPM

1750 PRM

Electric

1480 RPM

1770 RPM

Max case working pressure

350 PSI



*Expanding our line to meet your needs.*

**ap AURORA®**  
Pentair Water

# ELECTRIC DRIVEN

## 60 HZ

### 2000 GPM

ELECTRIC DRIVEN							
Pressure		Required Motor HP Rating			Pump Size & Model	Motor Frame	Unit Weight
(PSI)	(TDH)	UL Listed & FM Approved	Speed (RPM)	Horse Power (BHP)			
167	386	350	1770	370	8-481-24	447TS	5089
170	393	350	1770	377	8-481-24	447TS	5089
175	404	350	1770	390	8-481-24	447TS	5239
180	416	400	1770	406	8-481-24	447TS	5239
185	427	400	1770	419	8-481-24	447TS	5239
190	439	400	1770	436	8-481-24	447TS	5239
195	450	400	1770	453	8-481-24	447TS	5239
200	462	450	1770	467	8-481-24	447TS	5569
205	474	450	1770	481	8-481-24	449TS	5569
210	485	450	1770	495	8-481-24	449TS	5569
214	494	450	1770	510	8-481-24	449TS	5569

### 2500 GPM

ELECTRIC DRIVEN							
Pressure		Required Motor HP Rating			Pump Size & Model	Motor Frame	Unit Weight
(PSI)	(TDH)	UL Listed & FM Approved	Speed (RPM)	Horse Power (BHP)			
160	370	400	1770	404	8-481-24	447TS	5089
165	381	400	1770	422	8-481-24	447TS	5089
170	393	400	1770	437	8-481-24	447TS	5089
175	404	400	1770	452	8-481-24	447TS	5089
180	416	450	1770	466	8-481-24	449TS	5569
185	427	450	1770	490	8-481-24	449TS	5569
190	439	450	1770	508	8-481-24	449TS	5569
195	450	500	1770	524	8-481-24	449TS	5720
200	462	500	1770	540	8-481-24	449TS	5720
205	474	500	1770	557	8-481-24	449TS	5720
210	485	500	1770	573	8-481-24	449TS	5720
215	497	600	1770	589	8-481-24	RTF	RTF

## 50 HZ

### 2000 GPM

ELECTRIC DRIVEN							
Pressure		Required Motor HP Rating			Pump Size & Model	Motor Frame	Unit Weight
(PSI)	(TDH)	UL Listed & FM Approved	Speed (RPM)	Horse Power (BHP)			
110	254	250	1480	235	8-481-24	447TS	4977
115	266	250	1480	242	8-481-24	447TS	4977
120	277	250	1480	259	8-481-24	447TS	4977
125	289	250	1480	266	8-481-24	447TS	4977
130	300	250	1480	275	8-481-24	447TS	4977
135	312	250	1480	285	8-481-24	447TS	4977
140	323	300	1480	298	8-481-24	447TS	5089
145	335	300	1480	312	8-481-24	447TS	5089
150	347	300	1480	331	8-481-24	447TS	5089
155	358	350	1480	350	8-481-24	449TS	5239
160	370	350	1480	362	8-481-24	449TS	5239
165	381	350	1480	376	8-481-24	449TS	5239
170	393	350	1480	389	8-481-24	449TS	5239
172	402	350	1480	397	8-481-24	449TS	5239

### 2500 GPM

ELECTRIC DRIVEN							
Pressure		Required Motor HP Rating			Pump Size & Model	Motor Frame	Unit Weight
(PSI)	(TDH)	UL Listed & FM Approved	Speed (RPM)	Horse Power (BHP)			
115	266	250	1480	269	8-481-24	447TS	4977
120	277	250	1480	286	8-481-24	447TS	4977
125	289	300	1480	299	8-481-24	447TS	5089
130	300	300	1480	311	8-481-24	447TS	5089
135	312	300	1480	328	8-481-24	447TS	5089
140	323	350	1480	356	8-481-24	449TS	5239
145	335	350	1480	373	8-481-24	449TS	5239
150	347	350	1480	388	8-481-24	449TS	5239
155	358	350	1480	401	8-481-24	449TS	5239
160	370	400	1480	420	8-481-24	449TS	5569
165	381	400	1480	434	8-481-24	449TS	5569
167	386	400	1480	440	8-481-24	449TS	5569

# DIESEL DRIVEN

## 2000 GPM

## 2500 GPM

DIESEL DRIVEN							
Pressure		Required Engine Rating		Pump Size & Model	Engine Model	Engine HP	Weight
		Speed (RPM)	Horse Power (BHP)				
(PSI)	(TDH)						
110	254	1460	228	8-481-24	CFP83-F40	247	5292
115	266	1460	232	8-481-24	CFP83-F40	247	5292
120	277	1460	247	8-481-24	CFP11E-F10	320	5970
					JX6H-UF30	350	6335
125	289	1460	255	8-481-24	CFP11E-F10	320	5970
					JX6H-UF30	350	6335
130	300	1460	275	8-481-24	CFP11E-F10	320	5970
					JX6H-UF30	350	6335
135	312	1460	285	8-481-24	CFP11E-F10	320	5970
					JX6H-UF30	350	6335
140	323	1460	302	8-481-24	CFP11E-F10	320	5970
					JX6H-UF30	350	6335
145	335	1460	316	8-481-24	CFP11E-F20	364	5970
					JX6H-UF30	350	6335
150	347	1460	335	8-481-24	JX6H-UF30	350	6335
					CFP11E-F20	364	5970
155	358	1460	351	8-481-24	JX6H-UF40	380	6435
					CFP11E-F20	364	5970
160	370	1460	358	8-481-24	JX6H-UF40	380	6435
					CFP15E-F10	382	7414
165	381	1460	375	8-481-24	CFP15E-F20	411	7414
					JX6H-UF50	405	6435
167	386	1750	374	8-481-24	JX6H-UF40	460	6435
					CFP15E-F10	460	7414
170	393	1460	393	8-481-24	CFP15E-F20	411	7414
					JX6H-UF60	430	6435
		1750	379	8-481-24	JX6H-UF30	420	6335
CFP11E-F20	424				5970		
172	397	1460	396	8-481-24	CFP15E-F20	411	7414
					JX6H-UF60	430	6435
175	404	1750	391	8-481-24	JX6H-UF30	420	6335
					CFP11E-F20	424	5970
180	416	1750	406	8-481-24	JX6H-UF40	460	6435
					CFP11E-F20	424	5970
185	427	1750	418	8-481-24	CFP15E-F10	460	7414
					JX6H-UF40	460	6435
190	439	1750	436	8-481-24	CFP15E-F10	460	7414
					JX6H-UF40	460	6435
195	450	1750	454	8-481-24	CFP15E-F10	460	7414
					JX6H-UF50	485	6435
200	462	1750	468	8-481-24	CFP15E-F20	494	7414
					JX6H-UF50	485	6435
205	474	1750	481	8-481-24	JX6H-UF60	510	6435
					CFP15E-F30	542	7414
210	485	1750	495	8-481-24	JX6H-UF60	510	6435
					CFP15E-F30	542	7414
214	494	1750	505	8-481-24	CFP15E-F30	542	7414
					JX6H-UF70	575	6435

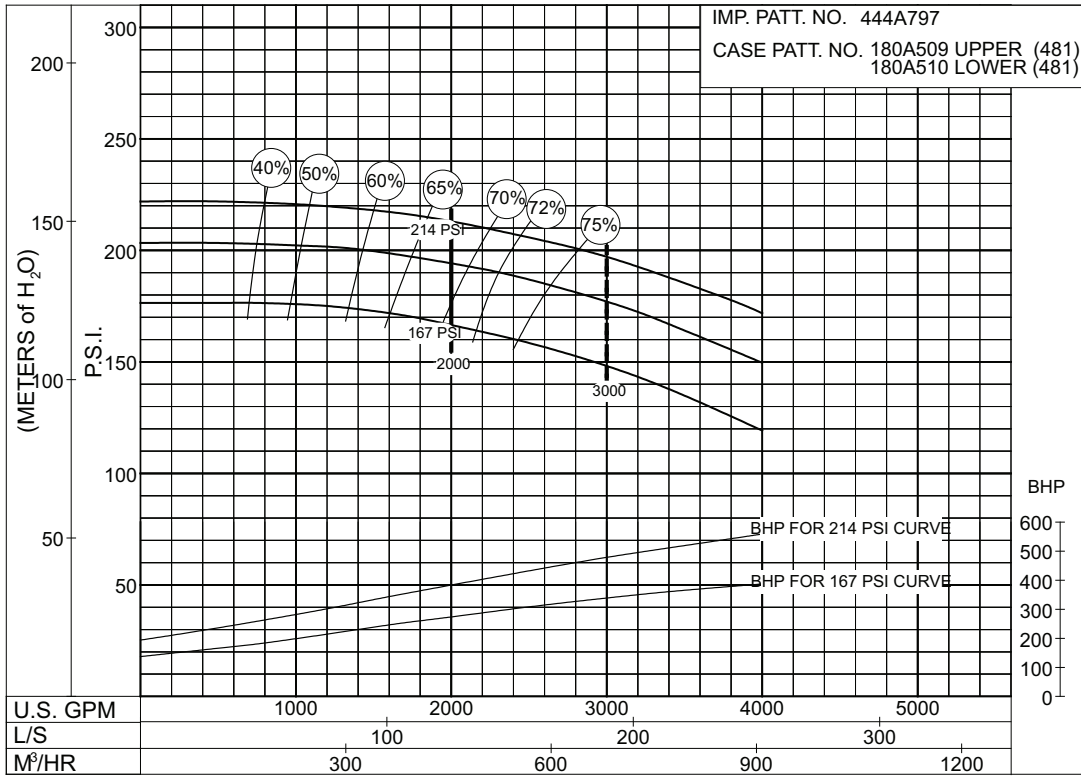
DIESEL DRIVEN							
Pressure		Required Engine Rating		Pump Size & Model	Engine Model	Engine HP	Weight
		Speed (RPM)	Horse Power (BHP)				
(PSI)	(TDH)						
115	266	1460	272	8-481-24	CFP11E-F10	320	5970
120	277	1460	284	8-481-24	CFP11E-F10	320	5970
125	289	1460	300	8-481-24	CFP11E-F10	320	5970
					JX6H-UF30	350	6335
130	300	1460	312	8-481-24	CFP11E-F20	364	5970
					JX6H-UF30	350	6335
135	312	1460	323	8-481-24	JX6H-UF30	350	6335
					CFP11E-F20	364	5970
140	323	1460	340	8-481-24	JX6H-UF40	380	6435
					CFP11E-F20	364	5970
145	335	1460	359	8-481-24	CFP15E-F10	382	7414
					JX6H-UF40	380	6435
150	347	1460	380	8-481-24	CFP15E-F20	411	7414
					JX6H-UF50	405	6435
155	358	1460	401	8-481-24	JX6H-UF60	430	6435
					CFP15E-F20	411	7414
160	370	1460	418	8-481-24	JX6H-UF70	485	6435
					CFP15E-F30	450	7414
		1750	404	8-481-24	JX6H-UF30	420	6335
CFP11E-F20	424				5970		
165	381	1460	425	8-481-24	CFP15E-F30	450	7414
					JX6H-UF70	485	6435
		1750	417	8-481-24	JX6H-UF40	460	6435
CFP15E-F10	460				7414		
167	386	1460	442	8-481-24	CFP15E-F30	450	7414
					JX6H-UF70	485	6435
170	393	1750	437	8-481-24	JX6H-UF40	460	6435
					CFP15E-F10	460	7414
175	404	1750	456	8-481-24	CFP15E-F20	494	7414
					JX6H-UF50	485	6435
180	416	1750	478	8-481-24	JX6H-UF60	510	6435
					CFP15E-F20	494	7414
185	427	1750	494	8-481-24	JX6H-UF60	510	6435
					CFP15E-F30	542	7414
190	439	1750	509	8-481-24	CFP15E-F30	542	7414
					JX6H-UF70	575	6435
195	450	1750	525	8-481-24	CFP15E-F30	542	7414
					JX6H-UF70	575	6435
200	462	1750	540	8-481-24	CFP15E-F40	575	5292
					JX6H-UF70	575	6435
205	474	1750	557	8-481-24	CFP15E-F40	575	5292
					JX6H-UF70	575	6435
210	485	1750	573	8-481-24	RTF	-	-
215	497	1750	586	8-481-24	RTF	-	-

\* Engine Rated Horsepower at 300 feet (91.4m) and 77° F (25°C)

# ELECTRIC DRIVEN 60HZ

**2000 GPM**

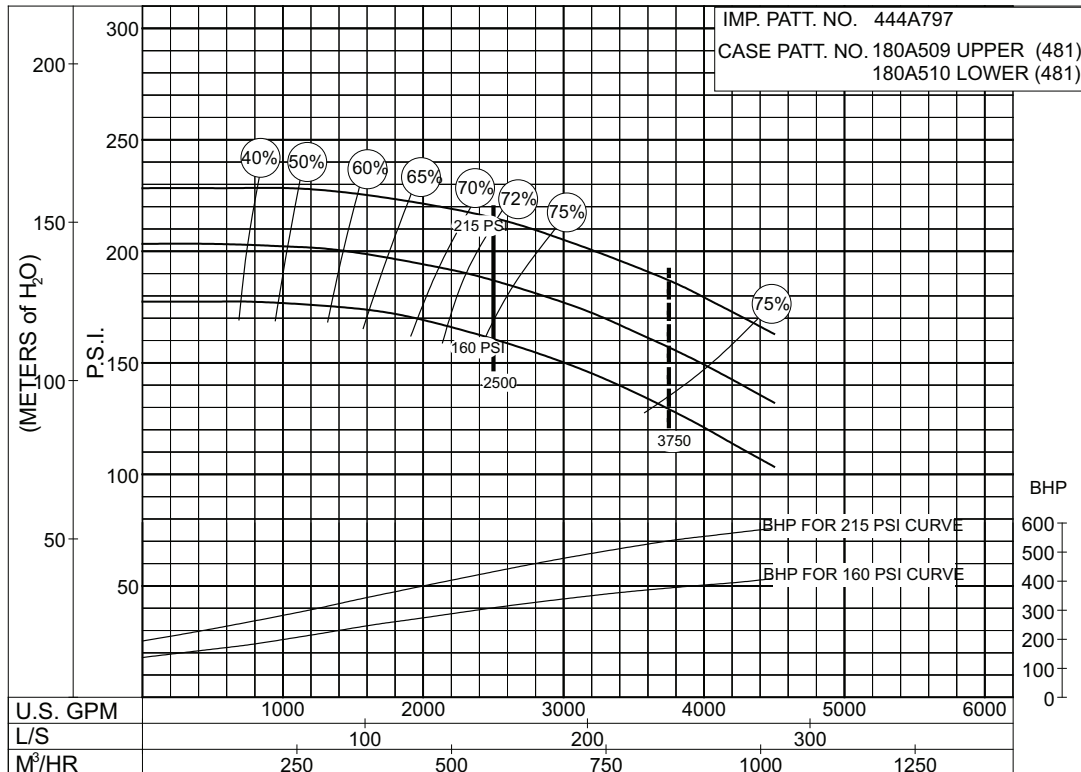
SIZE: 8-481-24    MODEL: 480    TYPE : ELECTRIC    IMPELLER : Enclosed    R. P. M. : 1770



**PC- 196151**

**2500 GPM**

SIZE: 8-481-24    MODEL: 480    TYPE : ELECTRIC    IMPELLER : Enclosed    R. P. M. : 1770

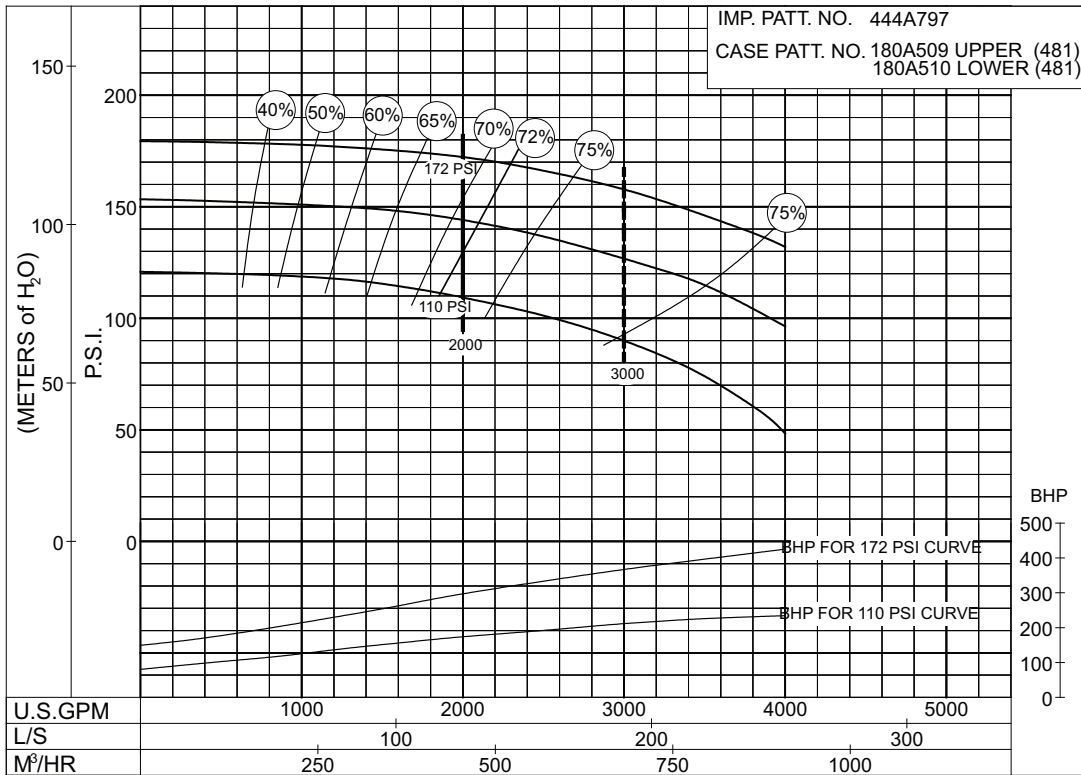


**PC- 196155**

# ELECTRIC DRIVEN 50HZ

**2000 GPM**

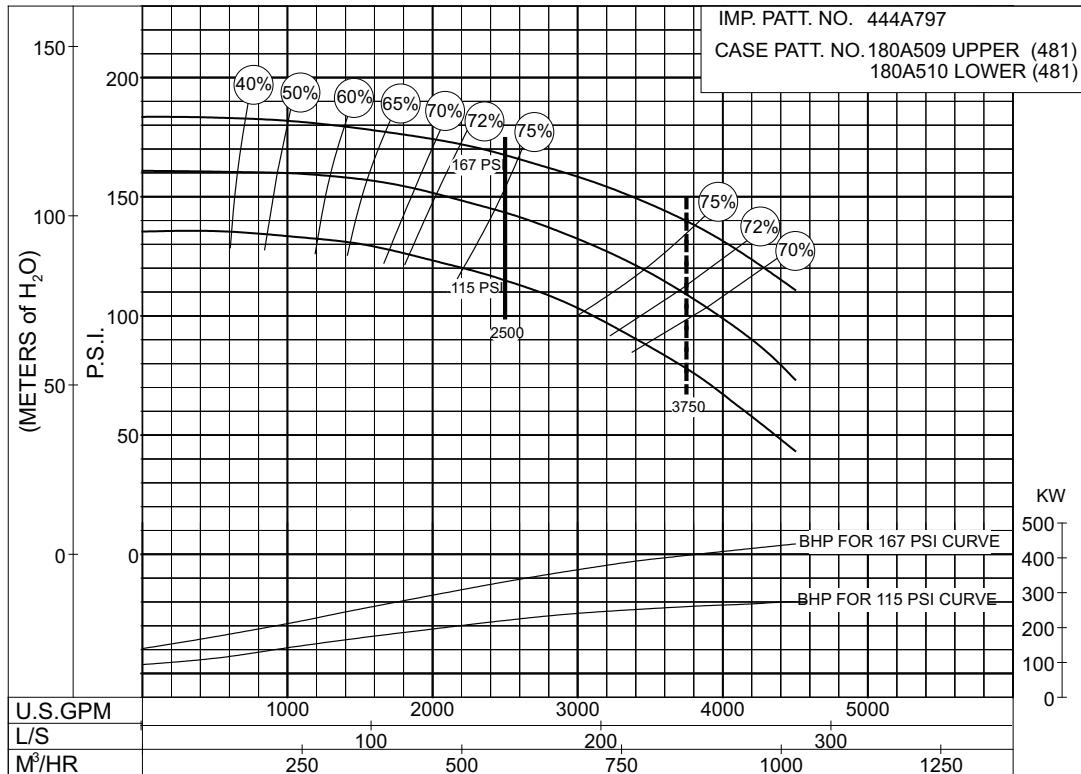
SIZE: 8-481-24    MODEL: 480    TYPE : ELECTRIC    IMPELLER : Enclosed    R. P. M. : 1480



PC- 196149

**2500 GPM**

SIZE: 8-481-24    MODEL: 480    TYPE : ELECTRIC    IMPELLER : Enclosed    R. P. M. : 1480

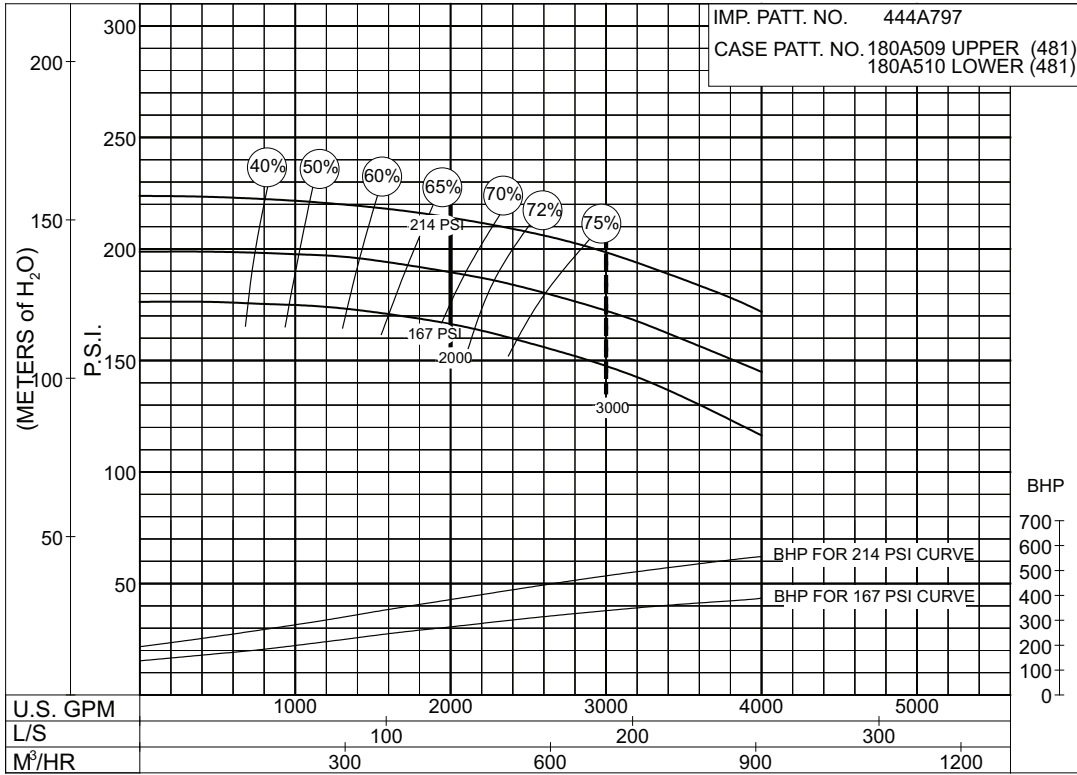


PC- 196153

# DIESEL DRIVEN

**2000 GPM**

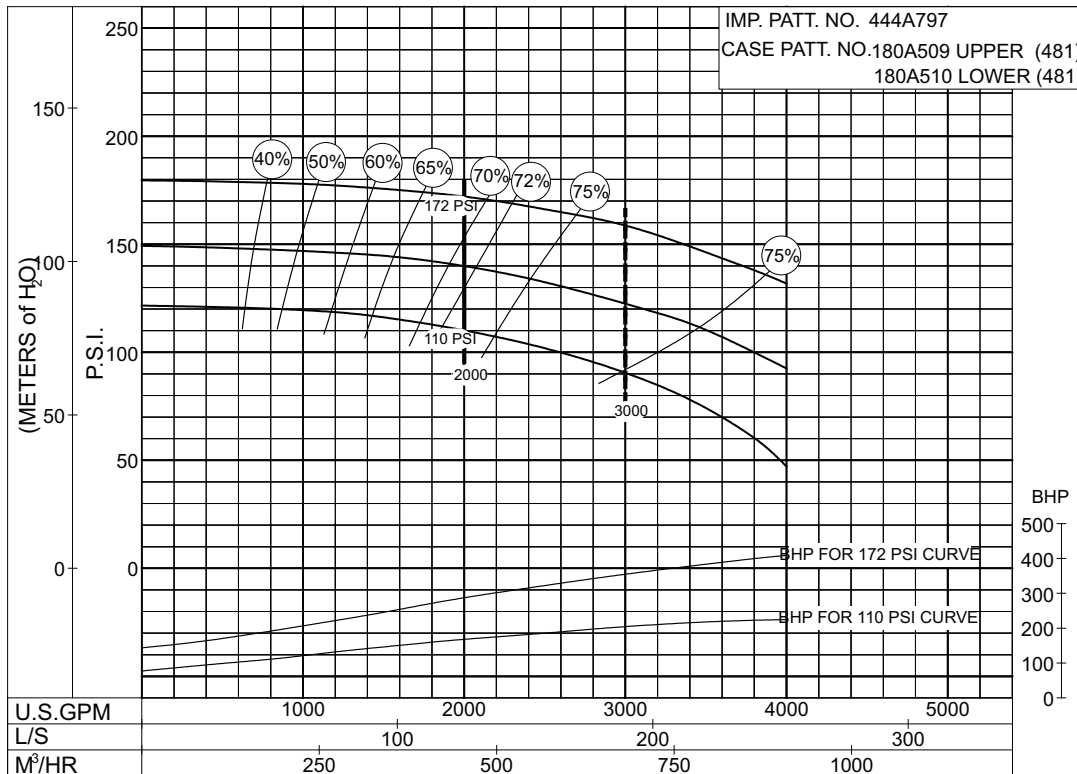
SIZE: 8-481-24    MODEL: 480    TYPE : DIESEL    IMPELLER : Enclosed    R. P. M. : 1750



**PC- 196150**

**2000 GPM**

SIZE: 8-481-24    MODEL: 480    TYPE : DIESEL    IMPELLER : Enclosed    R. P. M. : 1460

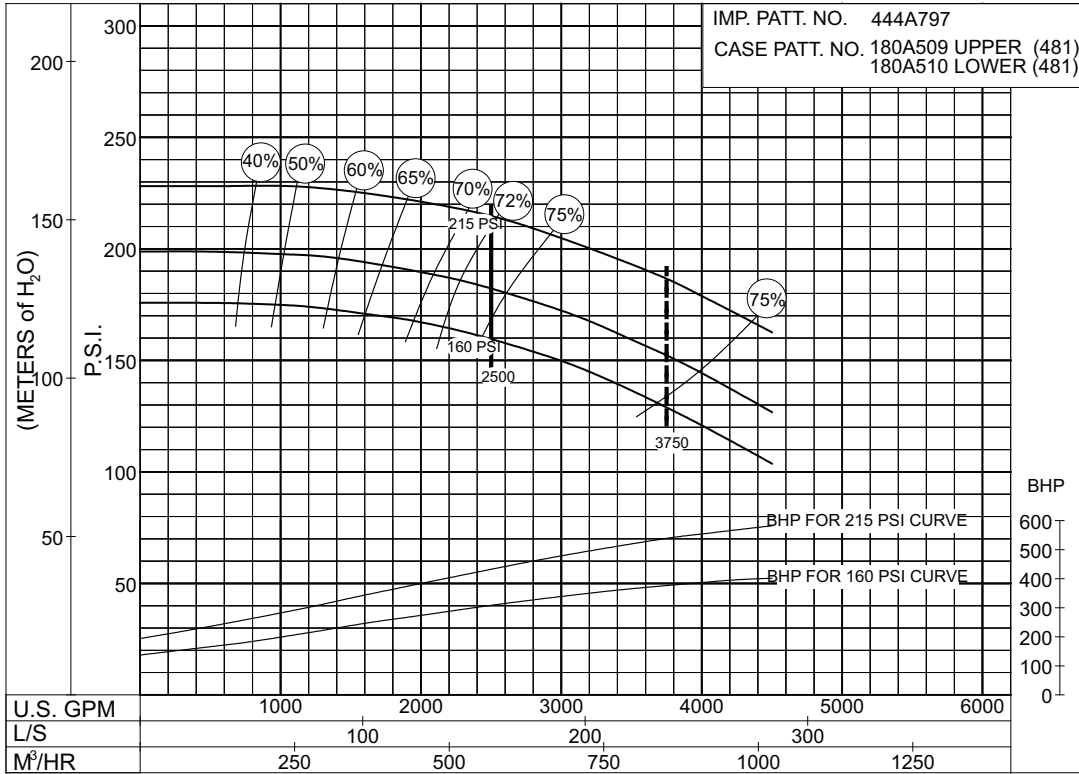


**PC- 196148**

# DIESEL DRIVEN

**2500 GPM**

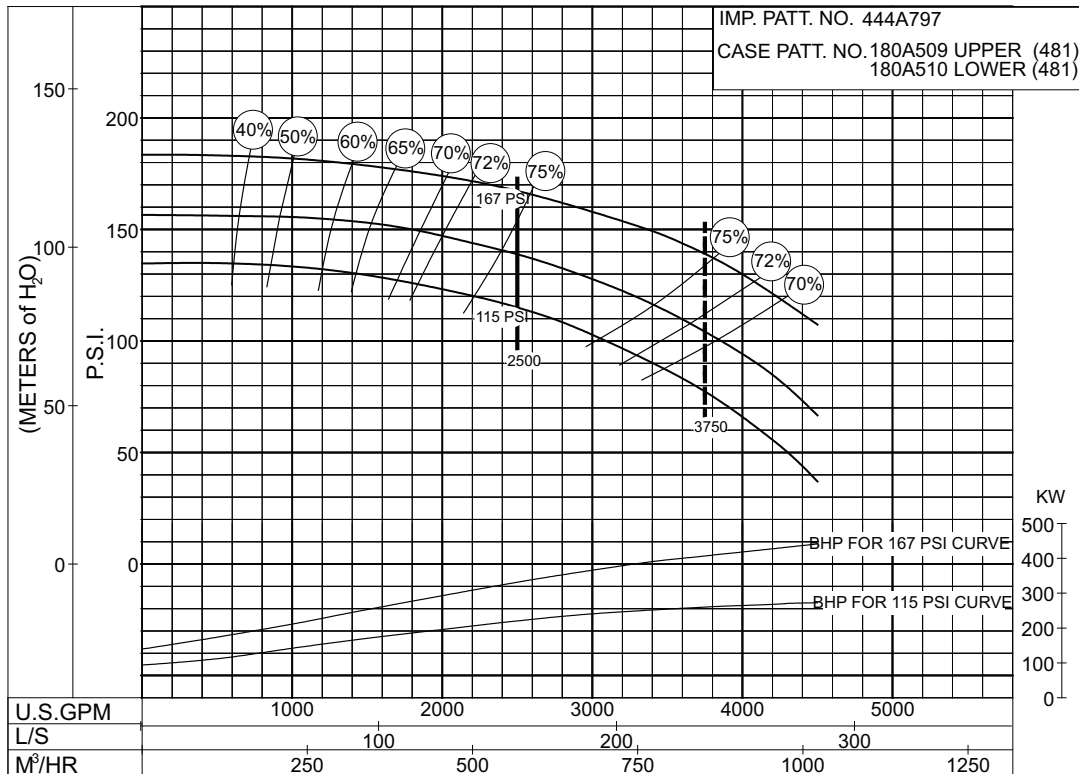
SIZE: 8-481-24    MODEL: 480    TYPE : DIESEL    IMPELLER : Enclosed    R. P. M. : 1750



**PC- 196154**

**2500 GPM**

SIZE: 8-481-24    MODEL: 480    TYPE : DIESEL    IMPELLER : Enclosed    R. P. M. : 1460

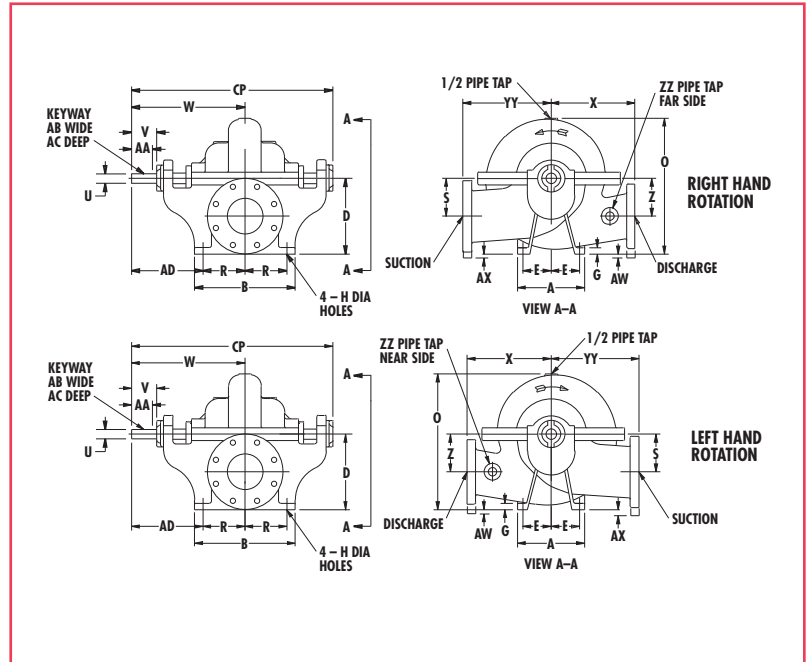


**PC- 196152**

# Features and Dimensions

## STANDARD FEATURES

- Cast iron casing (350 PSI working pressure)
- Bronze fitted pump construction
- Bronze shaft sleeves
- Bronze case wearing rings
- Dynamically balanced impellers
- Stainless steel impeller key
- Carbon steel shaft (150,000 psi minimum tensile)
- Corrosion-resistant teflon glass filled lantern rings
- Bronze stuffing box bushings
- Bronze glands
- Interwoven graphite-impregnated packing rings
- Cast integral bearing arms
- Regreasable ball bearings
- Double row ball bearing (outboard side)
- Upper casing lifting lugs
- Grade 5 parting flange bolting
- Water slingers and grease seals
- Hydrostatic and certified performance tests\*\*
- Coupling guard
- Suction and discharge gauges with shut-off cocks
- Automatic air release valve
- Casing relief valve (electric driven units only)



\*\*Test is performed with POSITIVE SUCTION PRESSURE

## DIMENSIONS (see drawing above)

PUMP SIZE			SUCTION	POWER SERIES	A	B	D	E	G	H	O	R	S	U	V	W	X	Z	AA	AB	AC	AD	AW	AX	CP	YY	ZZ
DISCH	MODEL	CASE BORE																									
8	481	24	12	7	15 (381)	22 (559)	26 (660)	6-1/2 (165)	1-1/8 (29)	7/8 (22)	43-7/8 (1114)	10 (254)	15 (381)	2-1/2 (64)	6-5/8 (168)	25-1/4 (641)	20 (508)	15 (381)	5 (127)	5/8 (16)	5/16 (8)	15-1/4 (387)	-	-	43-7/8 (1114)	25 (635)	1-1/4

Note: All Dimensions are in inches (mm)

For more information contact your local Aurora Fire Pump Distributor.

To find a local distributor, visit [www.aurorapump.com](http://www.aurorapump.com) to access our Distributor Locator.

Aurora Pump is a global manufacturer of pumps and systems for the commercial, municipal, industrial and fire protection markets. We provide the solutions to meet your pumping needs.

*From individual pumps to systems, we have it all.*

Note: Aurora Pump reserves the right to make revisions to its products and their specifications, and to this bulletin and related information, without notice.

**ap AURORA®**  
Pentair Water

800 Airport Road  
North Aurora, IL 60542

[www.aurorapump.com](http://www.aurorapump.com)

(630) 859-7000

(630) 859-7060 Fax

+ 1-630-859-1226 International Fax

SALES OFFICES IN ALL MAJOR CITIES AND COUNTRIES



LISTED



APPROVED

BUILT PER  
N.F.P.A 20

Rev. 9/07