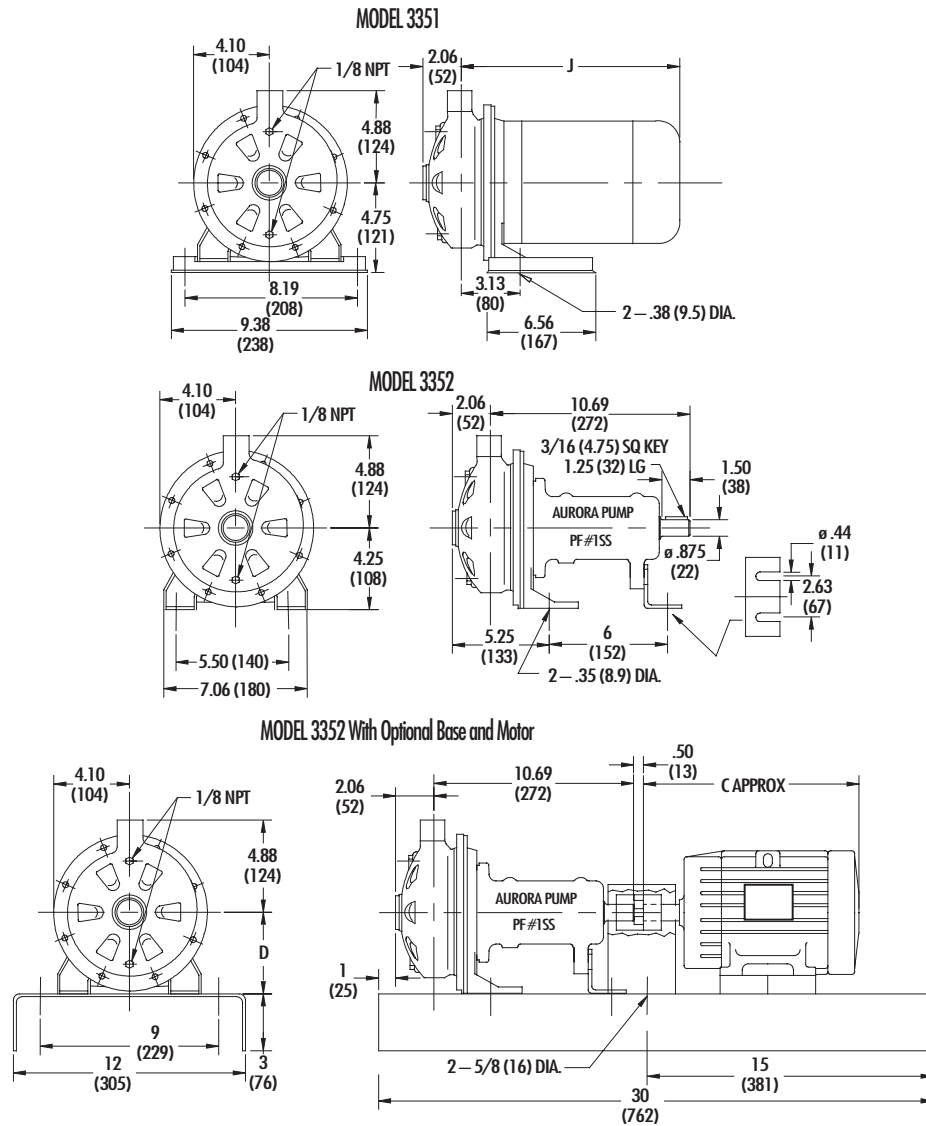


AURORA MODEL 3351/3352 PUMPS WITH OPTIONAL BASE



Model No	3351A 3352A	3351B 3352B	3351C 3352C	3351D 3352D	3351E 3352E	3351F 3352F	3351G 3352G	3351H 3352H	3351J 3352J
Discharge	1	1	1	1	1	1	1	1	1
Suction	1.25	1.25	1.25	1.25	1.25	1.25	1.5	1.5	1.5
Imp Dia	4.50	5.19	6.19	4.50	5.19	6.19	4.00	5.19	5.69
Std Hp +	0.75 0.55	1.5 (1)	2 (1.5)	1 (.75)	1.5 (1)	3 ++ (2)	1.5 (1)	3 (2)	3 ++ (2)
J Max	13.13 (334)	13.56 (344)	14.44 (367)	13.56 (344)	13.56 (344)	14.44 (367)	13.56 (344)	14.44 (367)	14.44 (367)

Frame	56	143	145	182	184
C Approx	10 (254)	12.5 (318)	13.5 (343)	14.5 (368)	15 (381)
D	4.25 (108)	4.25 (108)	4.25 (108)	4.5 (114)	4.5 (114)

Notes:

- All dimensions are in inches (mm) and may vary $\pm 1/4$ (6).
 - Motor dimensions are not specified as they vary with each motor manufacturer.
 - Not for construction purposes unless certified.
- + Standard horsepower is the selection for motors, 60 cycle (50 cycle) with 1.15 service factor. Refer to price pages for selections utilizing available jet shaft service factor.
- ++ Available as 1750 RPM close coupled.