

AURORA SERIES 340/360
MODELS 341A-342A-361A-362A
60 HERTZ MOTOR DATA SHEET
1 PHASE: NOT AVAILABLE
3 PHASE: 200 (ONLY) OR 230/460
OR 575 VOLTS

JM & JP MOTOR FRAMES

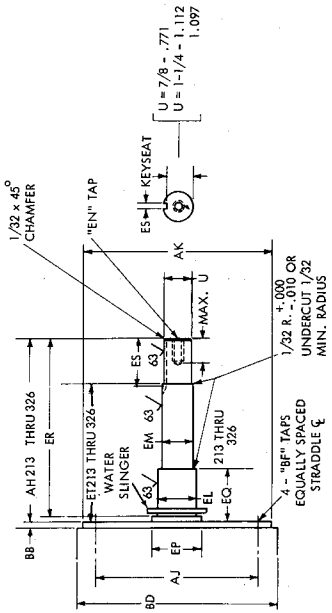
HP	RPM	C FLANGE MOTORS HORIZONTAL FOOT MOUNTED 143-184JM ONLY-SUPPORT FOOT MOUNTED ON PUMP O.D.P. - TOTALLY ENC. - EXP. PROOF				MAGNETIC STARTER SIZE REQ'D NEMA 1 ENCLOSURE			APPROXIMATE FULL LOAD AMPS.			
		OPEN DRIPPROOF FRAME	SERVICE FACTOR O.D.P.	TEFC & EXP. PROOF FRAME	SERVICE FACTOR TEFC & EXP. PROOF	200V & 230V	460V	575V	200V	230V	460V	575V
1	1750	143	1.15	143	1.0	00	00	00	4.0	3.5	1.8	1.4
	1150	145		145		00	00	00				
1-1/2	3500	143	1.15	143	1.0	00	00	00	5.4	4.7	2.4	1.9
	1750	145		145								
	1150	182		182								
2	3500	145	1.15	145	1.0	0	00	00	6.9	6	3	2.4
	1750	145		145								
	1150	184		184								
3	3500	145	1.15	182	1.0	0	0	0	9.9	8.6	4.3	3.4
	1750	182		182								
	1150	213		213								
5	3500	182	1.15	184	1.0	1	0	0	15.9	13.8	6.9	5.5
	1750	184		184								
	1150	215		215								
7-1/2	3500	184	1.15	213	1.0	1	1	1	24.3	21.1	10.5	8.4
	1750	213		213								
	1150	254		254								
10	3500	213	1.15	215	1.0	2	1	1	31	27	13.5	10.8
	1750	215		215								
	1150	256		256								
15	3500	215	1.15	254	1.0	3	2	2	45	39.2	19.6	15.7
	1750	254		254								
	1150	284		284								
20	3500	254	1.15	256	1.0	3	2	2	58.7	51	25.5	20
	1750	256		256								
	1150	286		286								
25	3500	256	1.15	284	1.0	3	2	2	72.7	63.2	31.6	25
	1750	284		284								
	1150	324		324								
30	3500	284	1.15	286	1.0	4	3	3	97.8	76.7	38.3	31
	1750	286		286								
	1150	326		326								
40	3500	286	1.15	324	1.0	4	3	3	115	100	50	40
	1750	324		324								
50	3500	324	1.15	326	1.0	5	3	3	141	123	61.5	49
	1750	326		326								
60	3500	326	1.15	N/A	1.0	5	4	4	163	142	71	57

NOTES:

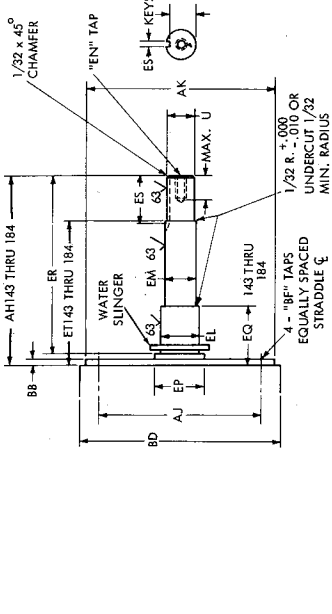
1. APPROXIMATE FULL LOAD AMPS BASED ON AVERAGES FOR AURORA STANDARD O.D.P. MOTORS.
2. MAGNETIC STARTER SIZE BASED ON AURORA STANDARD O.D.P. MOTORS.
3. MODELS 341A & 342A USE JM MOTOR FRAMES.
 MODELS 361A & 362A USE JP MOTOR FRAMES.

SHAFT EXTENSION

**JM/JP MOTOR FRAMES
 MODELS 341A-342A-361A-362A**



213 - 326 MOTOR FRAME DIMENSIONS



143 - 184 MOTOR FRAME DIMENSIONS

MOTOR FRAME SIZES	ES		EN				BF		
	LENGTH	WIDTH	340 TAP SIZE CLASS 3 R.H. THRD	340 TAP SIZE CLASS 3 R.H. THRD	340 DRILL DEPTH MAX.	340 DRILL DEPTH MAX.		340 BOLT PENETRATION	340 BOLT PENETRATION
143 & 145	1.65 MIN.	3.16 +.002 -0.000	3/8-16	3/8-16	1-1/8	1-1/8	3/4	3/8-16	9/16
182 & 184	1.65 MIN.	3.16 +.002 -0.000	3/8-16	3/8-16	1-1/8	1-1/8	3/4	3/8-16	9/16
213 & 215	1.65 MIN.	3.16 +.002 -0.000	3/8-16	3/8-16	1-1/8	1-1/8	3/4	3/8-16	9/16
254 & 256	2.53 MIN.	1.4 +.002 -0.000	1/2-13	1/2-13	1-1/2	1-1/2	1	1/2-13	3/4
284 Thru 326	2.50 MIN.	1.4 +.002 -0.000	1/2-13	1/2-13	1-1/2	1-1/2	1	5/8-11	15/16

MOTOR FRAME SIZES	340 U	360 U	340 AH	360 AH	340 AJ	360 AJ	340 AK	360 AK	340 BB	360 BB	340 BD	360 BD	340 EL	360 EL
143 & 145	7/8	.8745	4-1/4	7-5/16	5-7/8	5-3/2	4-1/2	5-3/2	4-1/2	5-3/2	6-5/8	MAX.	1-5/32	1-5/32
182 & 184	7/8	.8745	4-1/4	7-5/16	5-7/8	5-3/2	4-1/2	5-3/2	4-1/2	5-3/2	6-5/8	MAX.	1-1/4	1-1/4
213 & 215	7/8	.8745	4-1/4	7-5/16	5-7/8	5-3/2	4-1/2	5-3/2	4-1/2	5-3/2	9	MAX.	1-1/4	1-3/4
254 & 256	1-1/4	1.2485	5-1/4	8-1/8	7-1/4	8-1/2	5-1/2	5-1/2	5-1/2	5-1/2	10	MAX.	1-3/4	1-3/4
284 Thru 326	1-1/4	1.2490	5-1/4	8-1/8	7-1/4	8-1/2	5-1/2	5-1/2	5-1/2	5-1/2	14	MAX.	1-3/4	1-3/4

MOTOR FRAME SIZES	340 EM	360 EM	EP	340 EQ	360 EQ	340 ER	360 ER	340 ET	360 ET
143 & 145	1	1	1-5/32	5/8	5/8	4-1/4	4-1/4	2-7/8	5-15/16
182 & 184	1	1	1-1/4	5/8	5/8	4-1/4	4-1/4	2-7/8	5-15/16
213 & 215	1	1	1-3/4	5/8	5/8	4-1/4	4-1/4	2-7/8	5-7/8
254 & 256	1-3/8	1-3/8	1-3/4	5/8	5/8	5-1/4	5-1/4	3	5-7/8
284 Thru 326	1-3/8	1-3/8	2-1/8	5/8	5/8	5-1/4	5-1/4	3	5-7/8

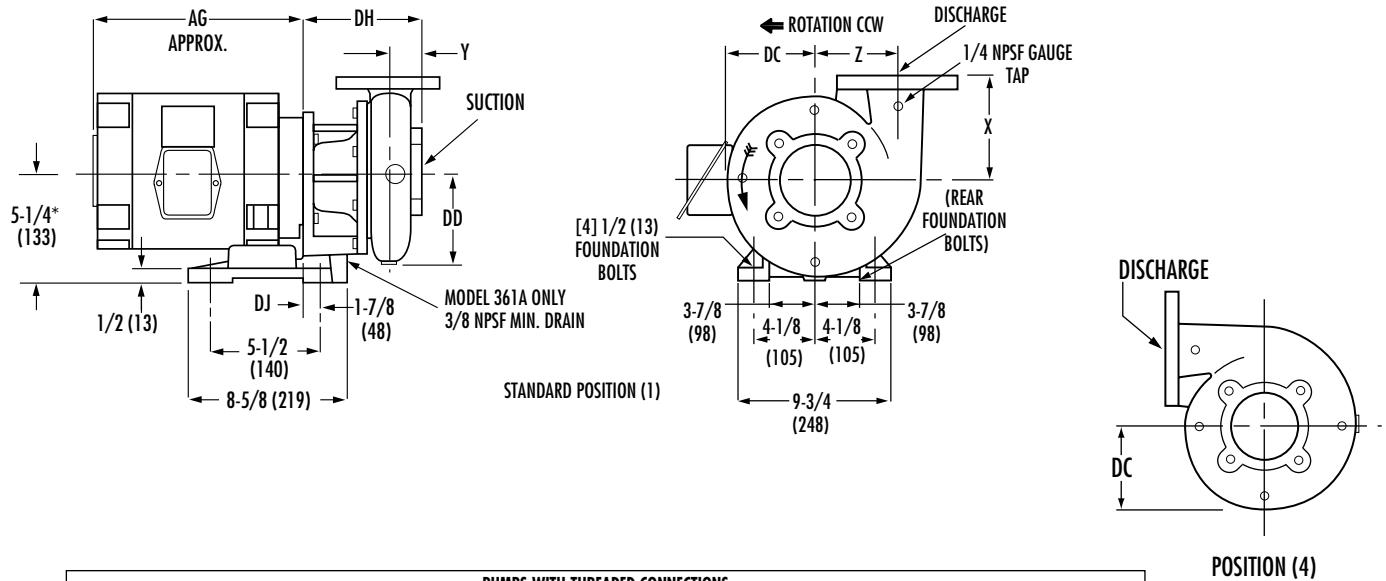
- NOTES:
 1. SHAFT MATERIAL - AISI 1018 STEEL
 2. WATER SLINGER TO BE FURNISHED WITH MOTOR
 3. END PLAY NOT TO EXCEED .005
 4. SHAFT DIAMETERS AND RABBIT TO BE CONCENTRIC WITHIN .004 TIR
 5. JM MOTORS ARE USED ON 340 SERIES PUMPS.
 JP MOTORS ARE USED ON 360 SERIES PUMPS.

*KEYWAY WIDTH FOR 213-215 MOTOR FRAME SIZES:
 JM MOTORS = 3/16" WIDE
 JP MOTORS = 1/4" WIDE

AURORA MODEL 341A & 361A PUMPS

JM & JP MOTOR FRAMES

143 THROUGH 184



PUMPS WITH THREADED CONNECTIONS											
DISCHARGE	SUCTION	CASE BORE	X	Y	Z	DC	DD	DH		DJ	
								341A	361A	341A	361A
1-1/4	1-1/2	7	5-1/4 (133)	2-7/16 (62)	4-3/16 (106)	4-15/16 (125)	5-3/16 (132)	7-3/16 (183)	10-1/4 (266)		
1-1/4	1-1/2	9	6-5/8 (168)	2-9/16 (65)	5-3/8 (136)	6-3/16 (157)	6-3/8 (162)	7-1/4 (184)	10-5/16 (261)		
1-1/2	2	7	5-3/8 (136)	2-1/2 (63)	4-5/16 (109)	5-1/8 (130)	5-3/8 (136)	7-5/16 (186)	10-3/8 (263)		
1-1/2	2	9	6-3/4 (171)	2-5/8 (67)	5-1/2 (140)	6-5/16 (160)	6-9/16 (167)	7-3/8 (187)	10-7/16 (262)		
PUMPS WITH AM. STD. 125 LB. FLANGED CONNECTIONS											
2	2-1/2	7	5-5/8 (143)	1-7/8 (48)	4-9/16 (116)	5-3/8 (136)	5-13/16 (148)	6-13/16 (173)	9-7/8 (250)	5/8 (16)	1-7/8 (48)
2	2-1/2	9	7 (178)	1-7/8 (48)	5-11/16 (144)	6-1/2 (165)	6-7/8 (175)	6-3/4 (171)	9-13/16 (249)		
2-1/2	3	7	5-7/8 (149)	2 (51)	4-13/16 (122)	5-13/16 (148)	6-1/4 (159)	7-1/16 (179)	10-1/8 (257)		
2-1/2	3	9	7-1/4 (184)	2 (51)	5-15/16 (151)	6-3/4 (171)	7-1/4 (184)	7 (178)	10-1/16 (255)		
3	4	9	7-1/2 (190)	2-1/8 (54)	6-1/8 (156)	6-7/8 (175)	7-7/16 (189)	7-1/4 (184)	10-5/16 (261)		
4	4	7	6-1/2 (165)	2-1/2 (63)	5-1/2 (140)	6-7/16 (163)	7-5/16 (186)	7-15/16 (202)	11 (279)		
4	5	9A	7-1/4 (184)	3-1/8 (79)	5-3/4 (146)	6-11/16 (169)	7-3/8 (187)	8-3/8 (212)	11-7/16 (290)		
4	5	9B	7-3/4 (196)	2-5/8 (66)	6-5/8 (168)	8-1/16 (204)	8-11/16 (220)	8 (203)	11 (279)		

JM OR JP

FRAME	AG
143	10 (254)
145	11 (279)
182	11 (279)
184	12 (305)

NOTES:

- All dimensions in inches and (mm).
 - Dimensions may vary $\pm 1/4$ (6).
 - Not for construction purposes unless certified.
 - Check discharge position. Casing dimension which exceed 5-1/4 (133) height may require pads for the support.
 - Conduit box is shown in approximate location. Dimensions are not specified as they vary with each motor manufacturer.
 - Model 341A uses JM motor frames.
Model 361A uses JP motor frames.
- * 6-1/4 (159) for 9 (229) case bore pumps (Model 341A only).

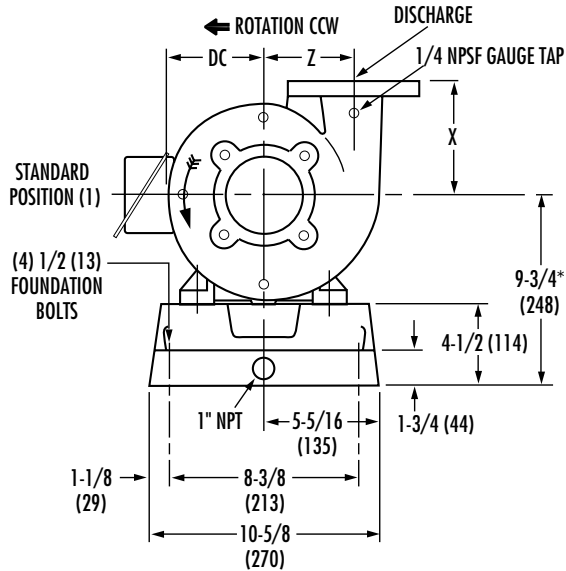
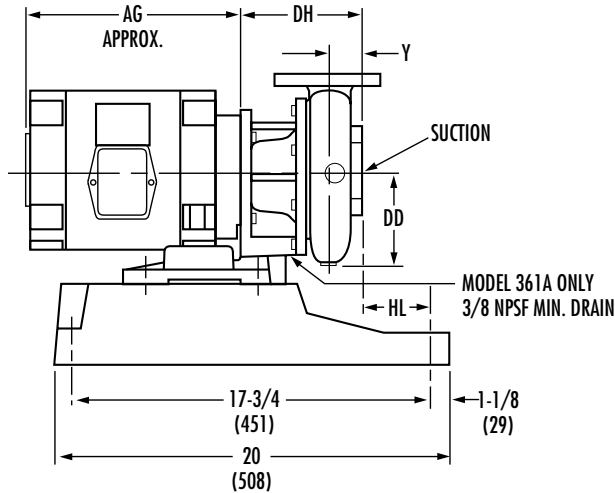
AURORA MODEL 341A & 361A PUMPS

Dated January 2003

Supersedes Section 340/360 Page 202

Dated October 1985

ON CAST IRON BASE JM & JP MOTOR FRAMES 143 THROUGH 184



PUMPS WITH THREADED CONNECTIONS											
DISCHARGE	SUCTION	CASE BORE	X	Y	Z	DC	DD	DH		HL	
								341A	361A	341A	361A
1-1/4	1-1/2	7	5-1/4 (133)	2-7/16 (62)	4-3/16 (106)	4-15/16 (125)	5-3/16 (132)	7-3/16 (183)	10-1/4 (260)	3-3/16 (81)	1-3/8 (35)
1-1/4	1-1/2	9	6-5/8 (168)	2-9/16 (65)	5-3/8 (136)	6-3/16 (157)	6-3/8 (162)	7-1/4 (184)	10-5/16 (262)	3-1/8 (79)	1-5/16 (33)
1-1/2	2	7	5-3/8 (136)	2-1/2 (63)	4-5/16 (109)	5-1/8 (130)	5-3/8 (136)	7-5/16 (186)	10-3/8 (264)	3-1/16 (78)	1-1/4 (32)
1-1/2	2	9	6-3/4 (171)	2-5/8 (67)	5-1/2 (140)	6-5/16 (160)	6-9/16 (167)	7-3/8 (187)	10-7/16 (265)	3 (76)	1-3/16 (30)
PUMPS WITH AM. STD. 125 LB. FLANGED CONNECTIONS											
2	2-1/2	7	5-5/8 (143)	1-7/8 (48)	4-9/16 (116)	5-3/8 (136)	5-13/16 (148)	6-13/16 (173)	9-7/8 (251)	3-9/16 (90)	1-3/4 (44)
2	2-1/2	9	7 (178)	1-7/8 (48)	5-11/16 (144)	6-1/2 (165)	6-7/8 (175)	6-3/4 (171)	9-13/16 (249)	3-5/8 (92)	1-13/16 (46)
2-1/2	3	7	5-7/8 (149)	2 (51)	4-13/16 (122)	5-13/16 (148)	6-1/4 (159)	7-1/16 (179)	10-1/8 (257)	3-5/16 (84)	1-1/2 (38)
2-1/2	3	9	7-1/4 (184)	2 (51)	5-15/16 (151)	6-3/4 (171)	7-1/4 (184)	7 (178)	10-1/16 (256)	3-3/8 (86)	1-9/16 (32)
3	4	9	7-1/2 (190)	2-1/8 (54)	6-1/8 (156)	6-7/8 (175)	7-7/16 (189)	7-1/4 (184)	10-5/16 (262)	3-1/8 (80)	1-5/16 (33)
4	4	7	6-1/2 (165)	2-1/2 (63)	5-1/2 (140)	6-7/16 (163)	7-5/16 (186)	7-15/16 (202)	11 (279)	2-7/16 (62)	5/8 (16)

JM OR JP	
FRAME	AG
143	10 (254)
145	11 (279)
182	11 (279)
184	12 (305)

NOTES:

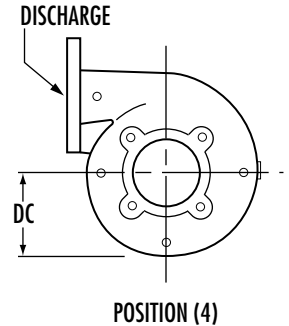
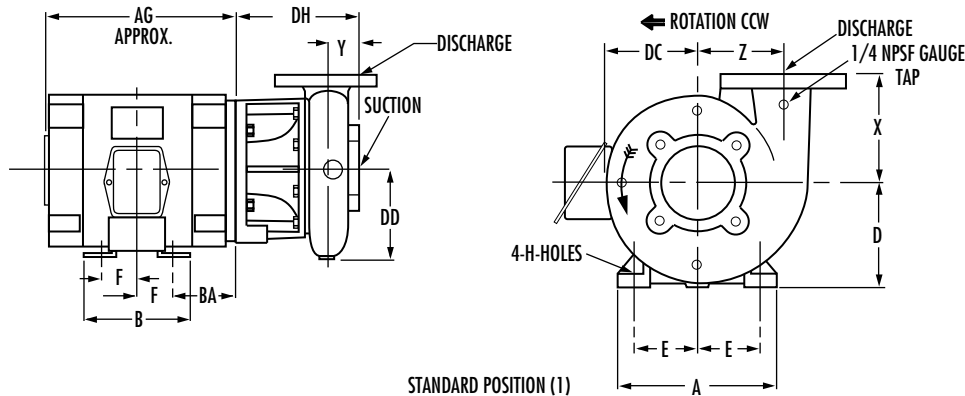
- All dimensions in inches and (mm).
 - Dimensions may vary ± 1/4 (6).
 - Not for construction purposes unless certified.
 - Conduit box is shown in approximate location. Dimensions are not specified as they vary with each motor manufacturer.
- * 10-3/4 (159) for 9 (229) case bore pumps (Model 341A only).

AURORA MODEL 341A & 361A PUMPS

JM & JP MOTOR FRAMES 213 THROUGH 326

Section 340/360 Page 203
Dated OCTOBER 2007

Supersedes Section 340/360 Page 203
Dated MARCH 2004



PUMPS WITH THREADED CONNECTIONS								DH			
DISCHARGE	SUCTION	CASE BORE	X	Y	Z	DC	DD	341A		361A	
								213JM 215JM	254JM 256JM	284JM 326JM	213JP- 326JP
1-1/4	1-1/2	7	5-1/4 (133)	2-7/16 (62)	4-3/16 (106)	4-15/16 (125)	5-3/16 (132)	7-3/16 (183)	N/A	N/A	N/A
1-1/4	1-1/2	9	6-5/8 (168)	2-9/16 (65)	5-3/8 (136)	6-3/16 (157)	6-3/8 (162)	7-1/4 (184)	N/A	N/A	N/A
1-1/2	2	7	5-3/8 (136)	2-1/2 (63)	4-5/16 (109)	5-1/8 (130)	5-3/8 (136)	7-5/16 (186)	N/A	N/A	N/A
1-1/2	2	9	6-3/4 (171)	2-5/8 (67)	5-1/2 (140)	6-5/16 (160)	6-9/16 (167)	7-3/8 (187)	8-3/8 (213)	8-3/8 (213)	11-1/4 (286)
1-1/2	2	11	9 (229)	2-13/16 (71)	6-1/8 (156)	7-1/16 (179)	7-1/4 (184)	7-9/16 (192)	8-9/16 (217)	8-9/16 (217)	11-7/16 (290)
1-1/2	2	12	7-3/4 (197)	2-3/4 (70)	7-1/16 (179)	8 (203)	8-1/4 (210)	7-5/8 (194)	8-5/8 (219)	N/A	11-1/2 (292)
PUMPS WITH ANSI 125 LB. FLANGED CONNECTIONS											
2	2-1/2	7	5-5/8 (143)	1-7/8 (48)	4-9/16 (116)	5-3/8 (136)	5-13/16 (148)	6-13/16 (173)	7-13/16 (198)	N/A	10-11/16 (271)
2	2-1/2	9	7 (178)	1-7/8 (48)	5-11/16 (144)	6-1/2 (165)	6-7/8 (175)	6-3/4 (171)	7-3/4 (197)	7-3/4 (197)	10-5/8 (270)
2	2-1/2	12	8 (203)	1-7/8 (48)	7-3/16 (183)	8-3/16 (208)	8-1/2 (216)	6-7/8 (175)	7-7/8 (200)	N/A	10-3/4 (273)
2	3	11	8 (203)	2-3/8 (60)	6-1/2 (165)	7 (178)	7-3/8 (187)	7-1/2 (190)	8-1/2 (216)	8-1/2 (216)	11-3/8 (289)
2-1/2	3	7	5-7/8 (149)	2 (51)	4-13/16 (122)	5-13/16 (148)	6-1/4 (159)	7-1/16 (179)	8-1/16 (205)	N/A	10-15/16 (278)
2-1/2	3	9	7-1/4 (184)	2 (51)	5-15/16 (151)	6-3/4 (163)	7-1/4 (184)	7 (178)	8 (203)	8 (203)	10-7/8 (276)
2-1/2	3	12	8-1/4 (210)	2 (51)	7-3/8 (187)	8-3/8 (213)	8-3/4 (213)	7-1/8 (181)	8-1/8 (206)	8-1/8 (206)	11 (279)
3	4	9	7-1/2 (190)	2-1/8 (54)	6-1/8 (156)	6-7/8 (175)	7-7/16 (189)	7-1/4 (184)	8-1/4 (210)	8-1/4 (210)	11-1/8 (283)
3	4	11	9 (229)	2-3/4 (70)	7 (179)	7-9/16 (192)	8-3/16 (208)	8-3/16 (208)	9-3/16 (233)	9-3/16 (233)	12-1/16 (306)
3	4	12	8-1/2 (216)	2-1/8 (54)	7-9/16 (192)	8-7/16 (214)	8-15/16 (227)	7-5/8 (194)	8-5/8 (219)	8-5/8 (219)	11-1/4 (286)
4	4	7	6-1/2 (165)	2-1/2 (63)	5-1/2 (140)	6-7/16 (163)	7-5/16 (186)	7-15/16 (202)	8-15/16 (227)	8-15/16 (227)	11-13/16 (300)
4	5	9A	7-1/4 (184)	3-1/8 (79)	5-3/4 (146)	6-11/16 (170)	7-3/8 (187)	8-3/8 (213)	9-3/8 (238)	9-3/8 (238)	12-1/4 (311)
4	5	9B	7-3/4 (197)	2-5/8 (67)	6-5/8 (168)	8-1/16 (205)	8-11/16 (221)	8 (203)	9 (229)	N/A	11-7/8 (302)
4	5	11	9 (229)	3 (76)	7-1/4 (184)	7-15/16 (202)	8-11/16 (221)	8-5/8 (219)	9-5/8 (244)	9-5/8 (244)	12-1/2 (317)
4	5	12	8-3/4 (222)	2-5/8 (67)	7-15/16 (202)	8-7/8 (225)	9-9/16 (243)	N/A	9-3/8 (238)	9-3/8 (238)	12 (305)
5	6	11	9 (229)	3-1/8 (79)	8-1/16 (205)	8-11/16 (221)	10-1/8 (257)	9-1/8 (232)	10-1/8 (257)	10-1/8 (259)	13 (330)
5	6	12	9 (229)	2-7/8 (73)	8-5/16 (211)	9-1/4 (235)	10-1/8 (257)	N/A	9-7/8 (251)	9-7/8 (251)	12-1/2 (317)
6	6	9	8-1/4 (210)	2-3/4 (70)	7 (178)	8 (203)	9 (229)	8-1/4 (210)	9-1/4 (235)	N/A	12-1/8 (308)
6	6	11	9-1/4 (235)	3-1/8 (79)	8-11/16 (221)	9-11/16 (246)	11-1/4 (286)	9-7/8 (251)	10-3/8 (264)	10-3/8 (264)	13 (330)
6	6	12	9-1/4 (235)	3-1/8 (79)	8-11/16 (221)	9-11/16 (246)	11-1/4 (286)	N/A	10-3/8 (264)	10-3/8 (264)	13 (330)

NOTES:

- All dimensions in inches and (mm).
- Dimensions may vary ± 1/4 (6).
- Not for construction purposes unless certified.
- N/A = Not Applicable.
- Check discharge position, casing dimensions which exceed dimension "D" may require pads for the motor.
- Conduit box is shown in approximate location. Dimensions are not specified as they vary with each motor manufacturer.

JM OR JP MOTOR FRAMES

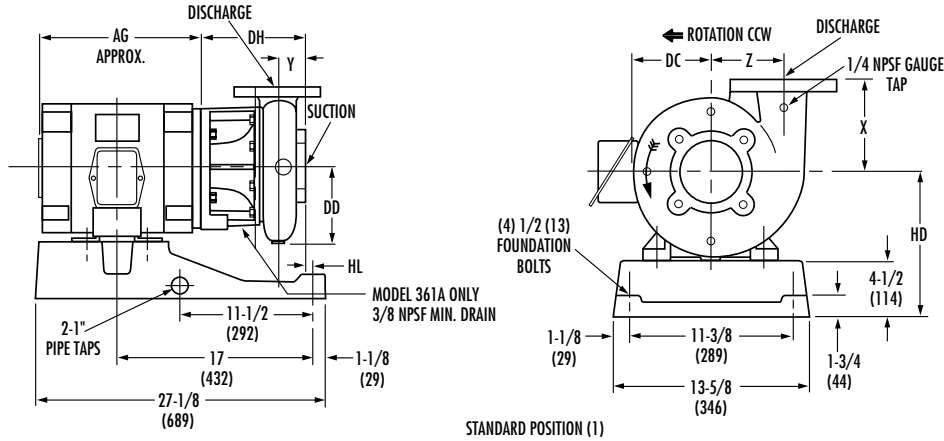
FRAME	213	215	254	256	284	286	324	326
A	10-1/2 (267)	10-1/2 (267)	12-1/2 (317)	12-1/2 (317)	14 (356)	14 (356)	16 (406)	16 (406)
B	7-1/2 (190)	9 (229)	10-3/4 (273)	12-1/2 (317)	12-1/2 (317)	14 (356)	14 (356)	15-1/2 (394)
D	5-1/4 (133)	5-1/4 (133)	6-1/4 (159)	6-1/4 (159)	7 (178)	7 (178)	8 (203)	8 (203)
E	4-1/4 (108)	4-1/4 (108)	5 (127)	5 (127)	5-1/2 (140)	5-1/2 (140)	6-1/4 (159)	6-1/4 (159)
F	2-3/4 (70)	3-1/2 (89)	4-1/8 (111)	5 (127)	5 (127)	5-1/2 (140)	5-1/2 (140)	6 (152)
H	13/32 (10)	13/32 (10)	17/32 (13)	17/32 (13)	17/32 (13)	17/32 (13)	21/32 (16)	21/32 (16)
AG APPROX.	14 (356)	15 (381)	17-1/2 (444)	19 (483)	19 (483)	21 (533)	22 (559)	23 (584)
BA	4-1/2 (114)	4-1/2 (114)	5 (127)	5 (127)	5 (127)	5 (127)	5-1/2 (140)	5-1/2 (140)

Dated January 2003

ON CAST IRON BASE
JM & JP MOTOR FRAMES
213 THROUGH 256

Supersedes Section 340/360 Page 204

Dated May 1996



JM OR JP

FRAME	AG
213	14 (355)
215	15 (381)
254	17 (431)
256	19 (355)

PUMPS WITH THREADED CONNECTIONS										DH			HD		HL		
DISCHARGE	SUCTION	CASE BORE	X	Y	Z	DC	DD	341A		361A	213	254	341A		213JM	254JM	213JP
								213JM	254JM	213JP-			215	256			
								215JM	256JM	256JP			215	256			
1 1/4	1 1/2	7	5-1/4 (133)	2-7/16 (62)	4-3/16 (106)	4-15/16 (125)	5-3/16 (132)	7-3/16 (183)	N/A	N/A	9-3/4* (248)	N/A	1-15/16 (49)	N/A	N/A	N/A	N/A
1-1/4	1-1/2	9	6-5/8 (168)	2-9/16 (65)	5-3/8 (137)	6-3/16 (157)	6-3/8 (162)	7-1/4 (184)	N/A	N/A	9-3/4* (248)	N/A	1-7/8 (48)	N/A	N/A	N/A	N/A
1-1/2	2	7	5-3/8 (137)	2-1/2 (64)	4-5/16 (110)	5-1/8 (130)	5-3/8 (137)	7-5/16 (186)	N/A	N/A	9-3/4* (248)	N/A	1-13/16 (46)	N/A	N/A	N/A	N/A
1-1/2	2	9	6-3/4 (171)	2-5/8 (67)	5-1/2 (140)	6-5/16 (160)	6-9/16 (167)	7-3/8 (187)	8-3/8 (213)	11-1/4 (286)	9-3/4 (248)	10-3/4 (273)	1-3/4 (44)	3/4 (19)	2-1/8 (54)	N/A	N/A
1-1/2	2	11	9 (229)	2-13/16 (71)	6-1/8 (156)	7-1/16 (179)	7-1/4 (184)	7-9/16 (192)	N/A	11-7/16 (291)	9-3/4 (248)	N/A	1-1/2 (38)	N/A	2-3/8 (60)	N/A	N/A
1-1/2	2	12	7-3/4 (197)	2-3/4 (70)	7-1/16 (179)	8 (203)	8-1/4 (210)	7-5/8 (194)	8-5/8 (219)	11-1/2 (292)	10-1/2 (267)	10-3/4 (273)	1-1/2 (38)	1/2 (13)	2-3/8 (60)	N/A	N/A
PUMPS WITH ANSI-125-LB.-FLANGED CONNECTIONS																	
2	2-1/2	7	5-5/8 (143)	1-7/8 (48)	4-9/16 (116)	5-3/8 (137)	5-13/16 (148)	6-13/16 (173)	7-13/16 (271)	10-11/16 (271)	9-3/4 (248)	10-3/4 (273)	2-5/16 (59)	1-5/16 (33)	1-9/16 (40)	N/A	N/A
2	2-1/2	9	7 (178)	1-7/8 (48)	5-11/16 (144)	6-1/2 (165)	6-7/8 (175)	6-3/4 (171)	7-3/4 (197)	10-5/8 (270)	9-3/4 (248)	10-3/4 (273)	2-3/8 (60)	1-3/8 (35)	1-1/2 (38)	N/A	N/A
2	2-1/2	12	8 (203)	1-7/8 (48)	7-3/16 (208)	8-3/16 (216)	8-1/2 (216)	6-7/8 (175)	7-7/8 (200)	10-3/4 (273)	10-1/2 (267)	10-3/4 (273)	2-1/4 (57)	1-1/4 (32)	1-5/8 (41)	N/A	N/A
2	3	11	8 (203)	2-3/8 (60)	6-1/2 (165)	7 (178)	7-3/8 (187)	7-1/2 (191)	8-1/2 (216)	11-3/8 (289)	9-3/4 (248)	10-3/4 (273)	1-1/2 (38)	1/2 (13)	2-1/16 (52)	N/A	N/A
2-1/2	3	7	5-7/8 (149)	2 (51)	4-13/16 (122)	5-13/16 (148)	6-1/4 (159)	7-1/16 (179)	8-1/16 (205)	10-15/16 (278)	9-3/4 (248)	10-3/4 (273)	2-1/16 (52)	1-1/16 (27)	1-13/16 (46)	N/A	N/A
2-1/2	3	9	7-1/4 (184)	2 (51)	5-15/16 (151)	6-3/4 (171)	7-1/4 (184)	7 (178)	8 (203)	10-7/8 (276)	9-3/4 (248)	10-3/4 (273)	2-1/8 (54)	1-1/8 (29)	1-3/4 (44)	N/A	N/A
2-1/2	3	12	8-1/4 (210)	2 (51)	7-3/8 (187)	8-3/8 (213)	8-3/4 (222)	7-1/8 (181)	8-1/8 (206)	11 (279)	10-1/2 (267)	10-3/4 (273)	2 (51)	1 (25)	1-7/8 (48)	N/A	N/A
3	4	9	7-1/2 (191)	2-1/8 (54)	6-1/8 (156)	6-7/8 (175)	7-7/16 (189)	7-1/4 (184)	8-1/4 (210)	11-1/8 (283)	9-3/4 (248)	10-3/4 (273)	1-7/8 (48)	7/8 (22)	2 (51)	N/A	N/A
3	4	11	9 (229)	2-3/4 (70)	7 (178)	7-9/16 (192)	8-3/16 (208)	8-3/16 (208)	9-3/16 (233)	12-1/16 (306)	10-1/2 (267)	10-3/4 (273)	13/16 (20)	0	2-3/4 (70)	N/A	N/A
3	4	12	8-1/2 (216)	2-1/8 (54)	7-9/16 (192)	8-7/16 (214)	8-15/16 (227)	7-5/8 (194)	8-5/8 (219)	11-1/4 (286)	10-1/2 (267)	10-3/4 (273)	1-3/4 (44)	3/4 (19)	2-1/8 (54)	N/A	N/A
4	4	7	6-1/2 (165)	2-1/2 (64)	5-1/2 (140)	6-7/16 (164)	7-5/16 (186)	7-15/16 (202)	8-15/16 (227)	11-13/16 (300)	9-3/4 (248)	10-3/4 (273)	1-3/16 (30)	3/16 (4)	2-11/16 (68)	N/A	N/A
4	5	9A	7-1/4 (184)	3-1/8 (79)	5-3/4 (146)	6-11/16 (170)	7-3/8 (187)	8-3/8 (213)	N/A	12-1/4 (311)	9-3/4 (248)	N/A	3/4 (19)	N/A	3-1/8 (79)	N/A	N/A
4	5	9B	7-3/4 (197)	2-5/8 (67)	6-5/8 (168)	8-1/16 (205)	8-11/16 (221)	8 (203)	9 (229)	11-7/8 (302)	10-1/2 (267)	10-3/4 (273)	1-1/8 (29)	1/8 (3)	2-3/4 (70)	N/A	N/A
4	5	11	9 (229)	3 (76)	7-1/4 (184)	7-15/16 (202)	8-11/16 (221)	8-5/8 (219)	9-5/8 (244)	12-1/2 (318)	11-1/4 (286)	11-1/2 (292)	3/8 (10)	0	3-3/16 (81)	N/A	N/A
4	5	12	8-3/4 (222)	2-5/8 (67)	7-15/16 (202)	8-7/8 (225)	9-9/16 (243)	N/A	9-9/8 (238)	12 (305)	N/A	10-3/4 (273)	N/A	0	2-7/8 (73)	N/A	N/A
5	6	11	9 (229)	3-1/8 (79)	8-1/16 (205)	8-11/16 (221)	10-1/8 (257)	9-1/8 (232)	10-1/8 (257)	13 (330)	12-1/4 (311)	12-1/4 (311)	0	0	3-11/16 (94)	N/A	N/A
6	6	9	8-1/4 (210)	2-3/4 (70)	7 (178)	8 (203)	9 (229)	8-1/4 (210)	9-1/4 (235)	12-1/8 (308)	10-1/2 (267)	10-3/4 (273)	7/8 (22)	0	3 (76)	N/A	N/A

- NOTES:
- All dimensions in inches and (mm).
 - Dimensions may vary ± 1/4 (6).
 - Not for construction purposes unless certified.
 - N/A = Not Applicable.
 - Conduit box is shown in approximate location. Dimensions are not specified as they vary with each motor manufacturer.

AURORA SERIES 360

SELECTION CHART

1150 R.P.M.

ENCLOSED IMPELLER

